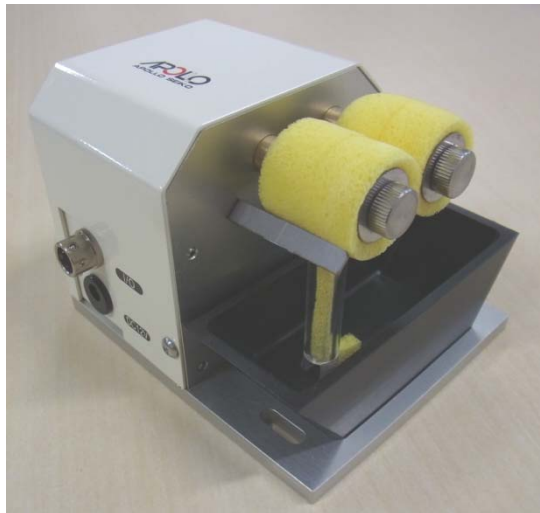


Sponge Roller Cleaner SRC-500DC

Operation Manual



Thank you for purchasing the SRC-500DC.
Read these instructions thoroughly for proper use of this device.
Make sure to read "Safety Notes" before you use the device.
This information protects you from possible dangers during use.

Apollo Seiko Ltd.

Safety Notes

This manual includes the important information to use the device safely. This also includes useful information to prevent avoiding injury or damaging property.

Please read this manual carefully prior to connecting or operating the SRC-500DC.

Keep this manual nearby the device all the time.

Supply only specified voltage

Do not connect to a power supply greater than the specified voltage. If not, electrical shock and /or damage to the device may occur.

Make sure that the electrical outlet is properly grounded. If the outlet is not properly grounded, electrical shock and/or damage to the device may occur.

Working ambient temperature and relative humidity

This device has been designed to use between 0~40 degree、10%~90%. Do not use this device under the condition exceeding here-in.

Handle with care

This device is designed to clean the iron tip.

Please be careful your fingers do not get caught in roller sponges.

Please make sure to turn off the power, when you replace sponges.

Please note water does not overflow from the water reservoir. It may cause electric shock or leak.

Please handle the device with care. If you drop or make a big impact/ vibration, it may cause malfunction.

If you note malfunction on unit

If the device become a malfunction, turn off the power immediately and contact a dealer you purchased the device from.

Immunity from responsibility

We **do not** take responsibility on a damage caused by misuse, mistake, accident, uses in abnormal condition or natural disaster such as an earthquake, a fire etc.

We **do not** take responsibility on contingency loss (Business loss、Business stop) caused by device stop.

We **do not** take responsibility on a loss caused by the operation not mentioning on this manual.

We **do not** take responsibility on a loss caused by a wrong connection with other equipment.

If for any reason the internal circuitry is tampered with altered or repaired without written consent of Apollo Seiko, the warranty is null and void. The customer is allowed to make necessary tooling adjustment, replace solder iron tips and make any necessary adjustments to the temperature controller.

Index

1. Summary	4
2. Description	4
3. Accessories	5
4. Specifications	5
5. Maintenance	7
6. Parts Lists	7

Apollo Seiko Ltd.

2271-7 Jinba, Gotenba,
Shizuoka, Japan

TEL: +81-(0)550-88-2828

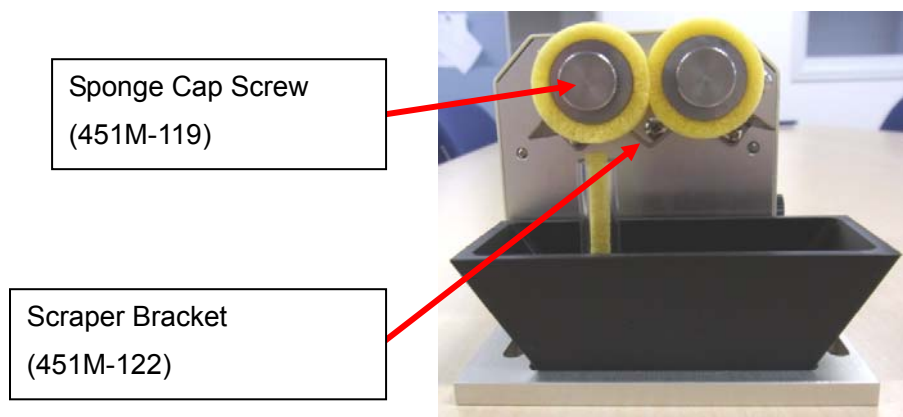
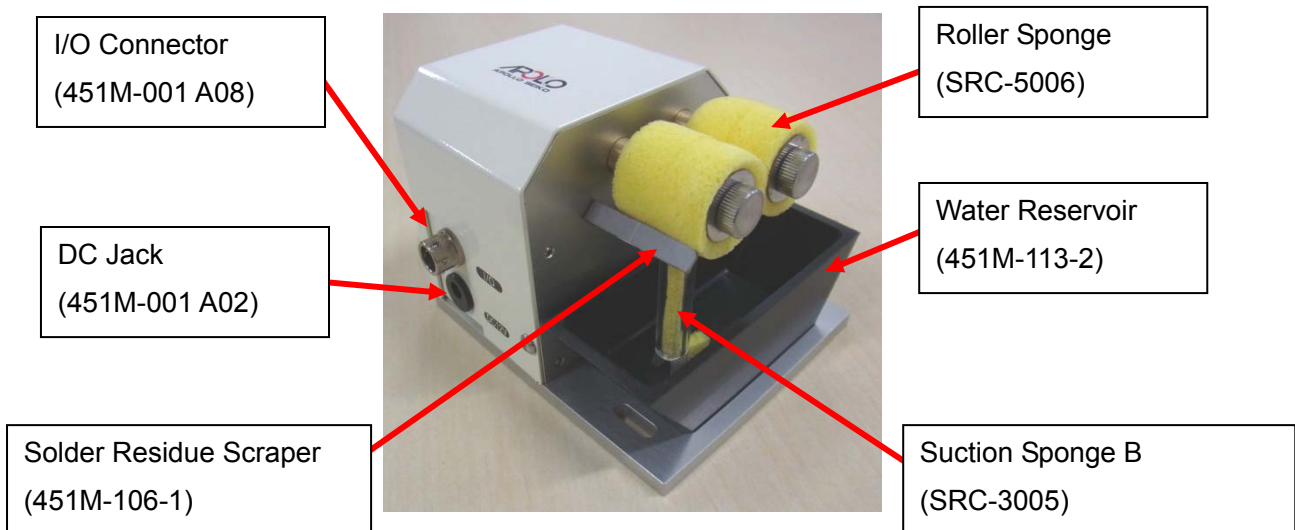
FAX: +81-(0)550-88-2830

E-mail: sales@apolloseiko.co.jp

1. Summary

- Adopting the stepping motors has achieved low voltage use. You can use this device safely.
- Multi power supply allows you using this device AC100V~240V.
- Sponges can be programmed to rotate forward and reverse by I/O signals.
- Inputting I/O signals enables this device works only when cleaning is necessary.
- By designing the smaller diameter sponges, it is possible to clean tip neatly.
- This sponge cleaner is equipped with “Solder Residue Scraper” that eliminates adherent residue on the surface of the sponges.
- This upsized water reservoir prevents solder residue spattering.

2. Description



3. Accessories



AC Adapter
(451M-001 A01)

*Please make sure to use the adapter only which is labeled as shown in the picture. If not, electric shock or damage may occur.



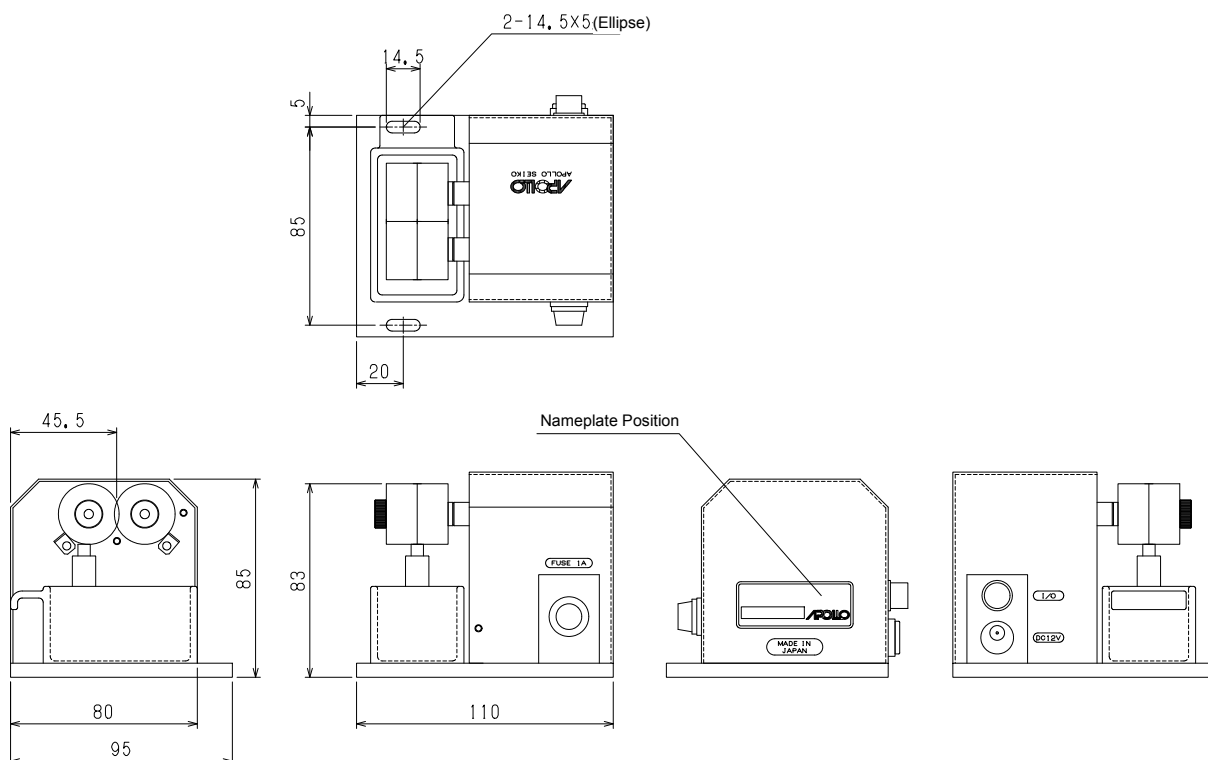
I/O Connector
(451M-001 A09)

*The customer who purchases our soldering robot and this device at same time, I/O connector is not attached.
I/O cable is already attached between the robot and the device.

4. Specifications

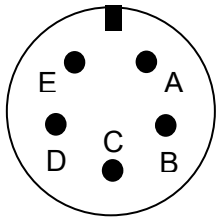
Type	SRC-500DC
Dimension	110mm(W) X 95mm(D) X 85mm(H)
Number of Sponge Rotation	Approx. 45rpm
Power Supply	AC100V~240V 50/60Hz
Using Liquid	Tap-water
Weight	Approx. 0.7kg

Dimensions



I/O Specification

Pin Configuration

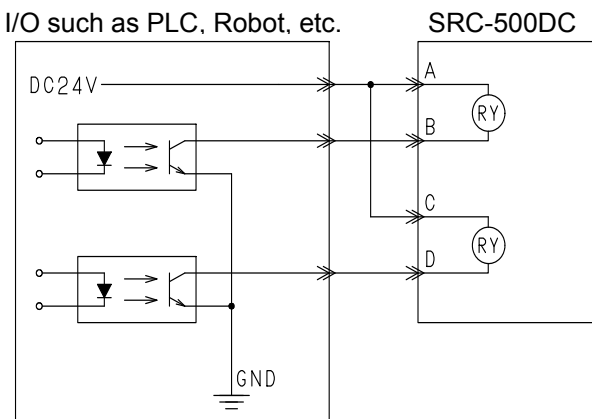


*View from the soldering side of the connector 451M-001 A09.

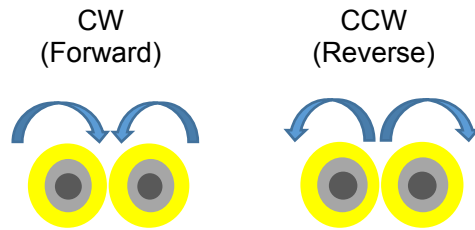
Pin Assignment

A	CW (Forward) 24V DC+
B	CW (Forward) 0V COM
C	CCW (Reverse) 24V DC+
D	CCW (Reverse) 0V COM
E	Unused

Wiring Example



Clockwise and Counterclockwise



- It requires 6.25mA to run the internal relay for CW or CCW rotation.
- Although +24V and 0V COM are assigned as shown above diagram, you can wire reversely, because there is no polarity.
- If the signals of CW and CCW rotation are turned ON at the same time, the motor will stop.



**This device is not designed as the sponges rotate continuously.
Please make sure to operate this device only when it is necessary.**

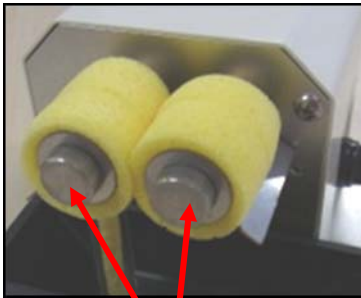
5. Maintenance



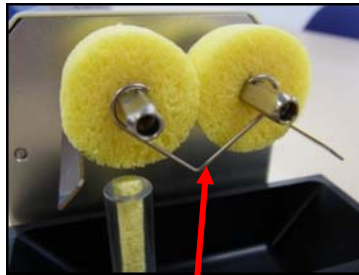
Please turn off the power, when you replace sponges.

Sponge(SRC-5006) replacement

*Please use the moisten sponges.



Loosen the two cap screws.



After removing the two front sponges, remove the scraper bracket.



Remove the two back sponges, then insert the new sponges in the reverse order.

Replacement of Suction Sponge (SRC-3005)

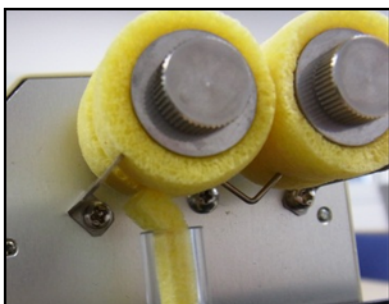
*Please use the moistened sponges.



Remove the used sponge.



Insert the moisten new sponge and pick out the tip of sponge with a pinch.



Please make sure the top of the suction sponge is touched to the roller sponge.

6. Parts Lists

Name	Type	Detail
Sponge	SRC-5006	 <p style="text-align: right;">8 pieces</p>
Suction Sponge B	SRC-3005	 <p style="text-align: right;">10 pieces</p>
Solder Residue Scraper	451M-106-1	 <p style="text-align: right;">2 pieces</p>
Scraper Bracket	451M-122	
Sponge Cap Screw	451-119	
Water Cup	451M-113-2	
I/O Connector	451M-001 A09	
Motor	451M-001 A04	